



## ASSET INVENTORY MODULE



As corporations and institutions grow so does the acquisition of capital assets. As budgets tighten, the need to better manage physical resources increases.

Over the last 18 years, we have grown a system adaptable to today's needs using tomorrow's technology.

Logi FM is different because it is designed by qualified engineers who have need of specific information. It is not an add-on to an accounting based software. It is intended for use by facilities and equipment managers with the possibility of interfacing with third party software.



Ideal for single or multi-facility operations in the following industries and services

- ◆ Pharmaceutical industry
- ◆ Manufacturing
- ◆ Distribution
- ◆ Health Care - Hospitals & Nursing Homes
- ◆ Education
- ◆ Finance
- ◆ Engineering & Architecture
- ◆ Sports Clubs
- ◆ Residences

# FACILITIES MANAGEMENT



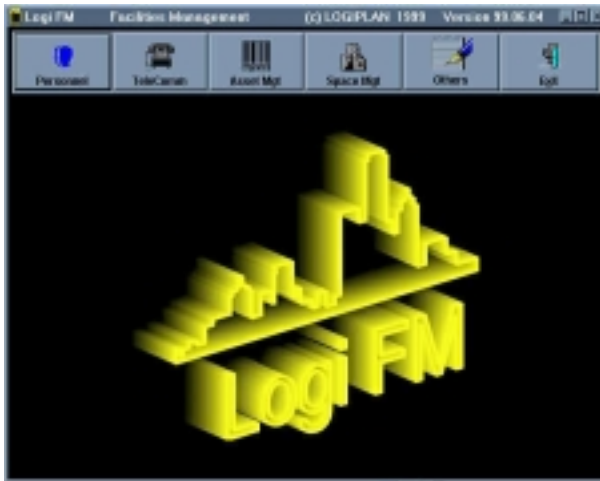
A complete building knowledge base  
& tracking system

**Toll free: 1-877-683-5065**

<http://www.logiplan.net>

## ***Benefits***

- ◆ System is bar code based for quick subsequent item tracking.
- ◆ Find equipment by precise location system.
- ◆ Generate reports for equipment maintenance negotiations with vendors and suppliers.
- ◆ Generate reports for insurance purposes/claims.
- ◆ Maintains warranty period information.
- ◆ Maintains electrical power requirements for each item.
- ◆ It's planning tools allowing user to enter future planned locations in new or renovated facilities and as a design tool for relocation, expansion, restructuring and consolidation.
- ◆ Once the initial inventory is taken, there is no manual data.... it's all electronic!



## ***Other features***

- ◆ Easy to use.
- ◆ Pull down lists allow quick data entry.
- ◆ Database updated using bar code hand held data capture device.
- ◆ Develop a catalog of common equipment.
- ◆ Reports developed according to client needs.
- ◆ Resistant plasticized bar-coded identification labels.

## ***System Modules soon to be released\****

- ◆ Space planning
- ◆ Asset inventory management (including computer, production, testing, or any other equipment and furniture)
- ◆ Computer jack monitoring
- ◆ Telephone jack, extension and services monitoring
- ◆ Staffing
- ◆ Key system management

\* Ready soon for 32 bit Windows 95 or 98 operating system



Setting up the asset inventory system...

## Defining locations

### Rooms

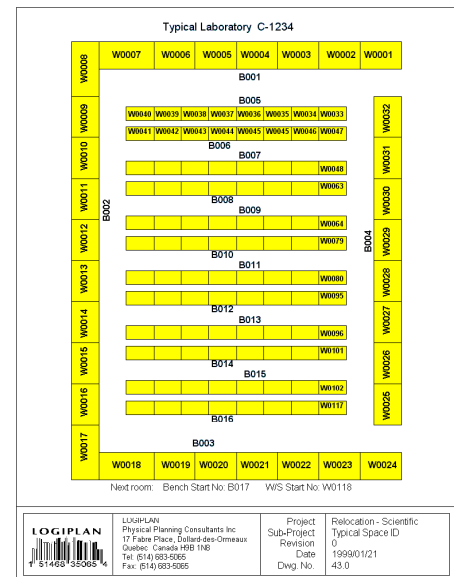
We develop a plan for each facility using existing or new floor plans. The schematic drawings are used to develop a numbering scheme suitable for subsequent bar coding. Each room/door is bar coded.

### Benches/Aisles

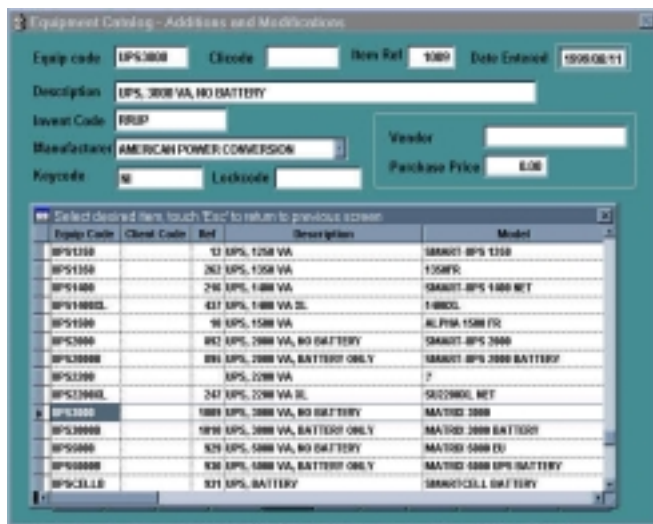
In the case of a laboratory, each room is then divided into Benches and an appropriate numbering scheme is developed. Each Bench is bar coded. In the case of a warehouse, the aisle number is bar coded.

### Workstation/Section

A sequential numbering scheme is used to develop workstation bar code labels. In the case of a warehouse, the shelf or section is bar coded.



## Initial Recording of the Data



Using LOGIPLAN's preprinted data collection sheets, data is recorded in accordance with a given set of procedures. A bar coded plasticized label is applied to each inventoried item. The client can enter the data in a Windows-based software or can send the data collection sheets to LOGIPLAN for processing.

During the data entry process, a catalog of frequently appearing items is developed to save data entry time.

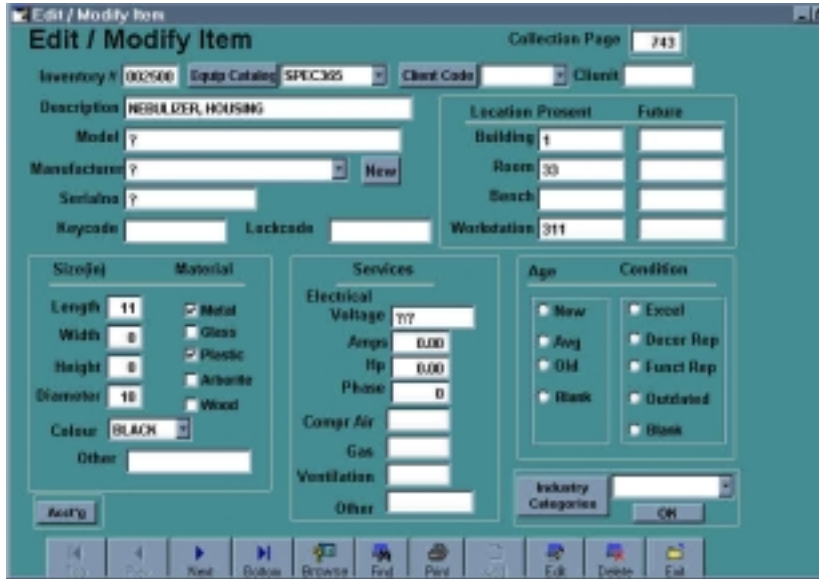
# FACILITIES MANAGEMENT



A complete building knowledge base & tracking system

Toll free: 1-877-683-5065

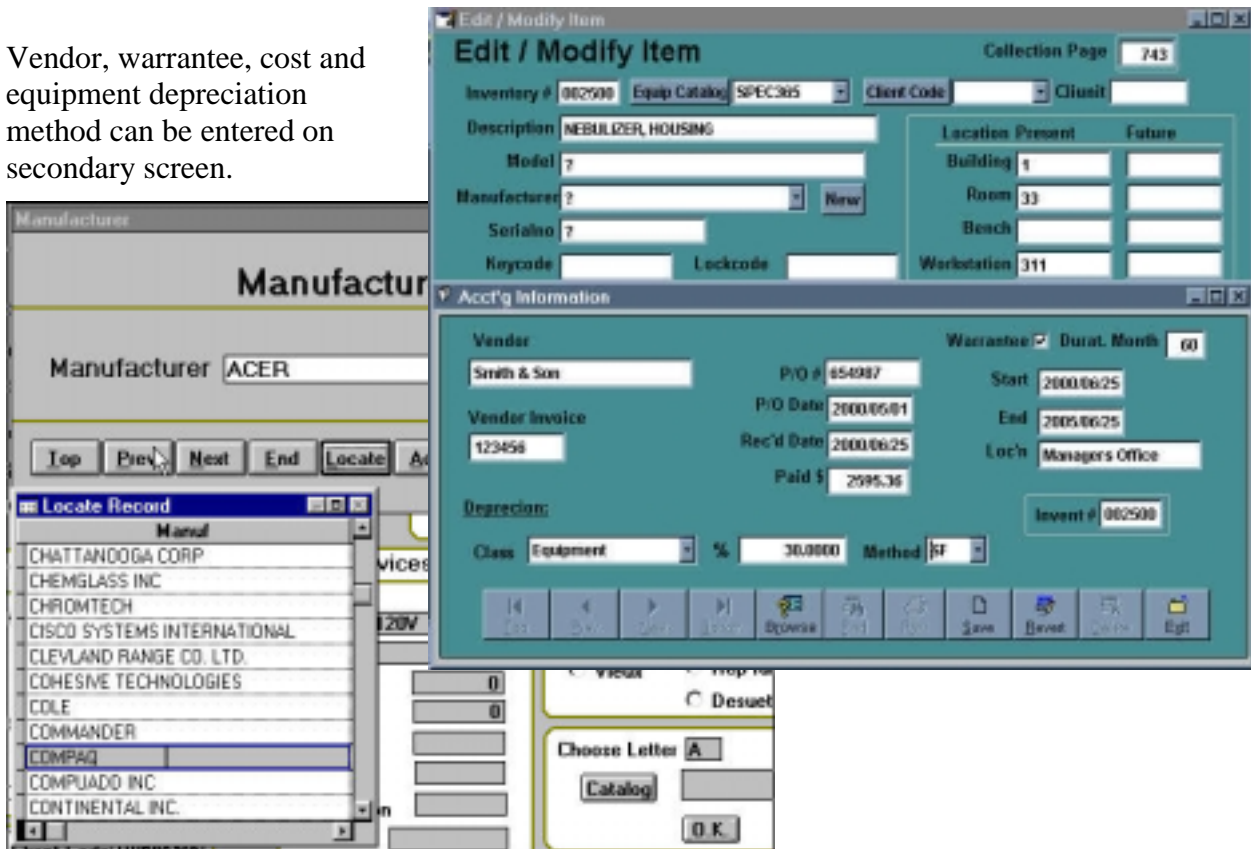
<http://www.logiplan.net>

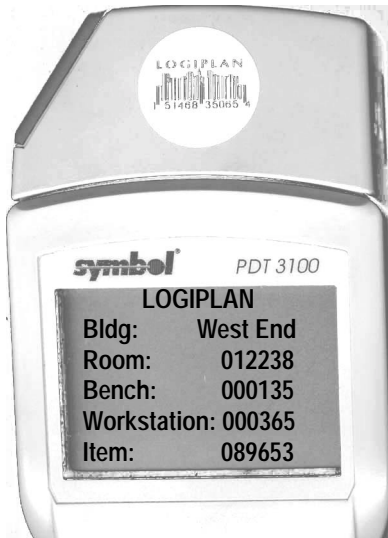


The multi-functional screen with drop down selections helps you enter data quickly and uniformly for accurate retrievability.

As the important information for each item is collected on preprinted data sheets. A bar coded plasticized label is applied to each inventoried item. This information is keyed into the database.

Vendor, warrantee, cost and equipment depreciation method can be entered on secondary screen.





### ***Scanning the Assets***

Once the inventory database is complete and updated as new items are received and placed, recording the presence and location of each item is simple and no preprinted or written information is required.

You simply enter a building, enter the building name, scan the bar code of the room you are entering, the bench barcode, if applicable, the workstation bar code, then each item in the workstation. The device can store at least 6,000 items.

Attached to the PC is a downloader/charger which downloads the data while recharging the batteries.

### ***Updating the database***

Once the data has been downloaded, the LogiFM software fills in the secondary fields in the database along with the date. After the completion of the scanning process and when you so instruct, the main database is updated with the new locations fields in updates the database.

Reports are available for items not found and location changes. Other reports are available upon request.

### ***System Requirements***

- Windows 95 or 98
- Pentium 166, or Higher
- 32 Megabytes RAM
- Hard Drive with 30 Megabytes free
- SVGA Monitor
- Compatible Microsoft Windows Mouse
- Available serial port
- Laser Printer

For more information, call our toll free number 1-877-683-6065 and ask about our LogiFM products.